



**NATIONAL ARTS CENTRE
CENTRE NATIONAL DES ARTS**

Canada is our stage. Le Canada en scène.

FOURTH STAGE

TECHNICAL INFORMATION



Updated April 2020



Table of Contents

ADDRESSES	4
PHONE NUMBERS	4
HEALTH & SAFETY	5
SMOKING	5
PERSONAL PROTECTIVE EQUIPMENT (PPE).....	5
PYROTECHNICS	5
FIREARMS	5
AUDIO LEVELS.....	5
ADDITIONAL INFORMATION	6
GENERAL INFORMATION	7
SEATING CHART	7
SEATING CAPACITY	7
ROOM	7
VENUE FLOOR.....	8
GRID	8
DIMENSIONS.....	8
FREE HEIGHT.....	8
MASKING.....	8
LOADING DOCK	8
UNION	8
AUDIO.....	9
MIX POSITION	9
EQUIPMENT	9
SPEAKERS	9
BACKLINE	9
INTERCOM SYSTEM.....	9
PIANO	9



**NATIONAL ARTS CENTRE
CENTRE NATIONAL DES ARTS**

Canada is our stage. Le Canada en scène.

AUDIO LEVELS	9
LIGHTING	10
CONTROL POSITIONS	10
CONSOLES	10
PROTOCOL	10
DIMMER	10
INSTRUMENTS	10
ELECTRICITY	10
CONNECTORS	10
COLOUR MEDIA	10
ACCESSORIES	11
ADDITIONAL EQUIPMENT	11
RISERS	11
DANCE FLOOR	11
BACKSTAGE INFO	12
DRESSING ROOM & GREEN ROOM	12
WARDROBE	12



**NATIONAL ARTS CENTRE
CENTRE NATIONAL DES ARTS**

Canada is our stage. Le Canada en scène.

ADDRESSES

Main	National Arts Centre 1 Elgin Street Ottawa, ON K1P 5W1
Postal	P.O. Box 1534, station B Ottawa, ON K1P 5W1
Stage Door	1 Queen Elizabeth Drive Ottawa, ON See exact location here .
Loading Area	All loading is done from street level off of Elgin Street with access limited to double standard doors (65" W x 93" H) (1.7 m W x 2.4 m H).
Website	www.nac-cna.ca
Wi-Fi Network	
Backstage	Invite-Interprète-Performer (sign in required)
Lobby/Public Spaces	NAC-WiFi-CNA (sign in required)

PHONE NUMBERS

General	(613) 947-7000
Toll Free (<i>Canada/US</i>)	1-866-850-ARTS (2787)
Fax	(613) 996-9578
Email	info@nac-cna.ca
Production Department	(613) 947-7000 x 248
Production Fax	(613) 943-8692
Production Email	production@nac-cna.ca
Security, Stage Door (24 hours)	(613) 947-7000 x 666



HEALTH & SAFETY

SMOKING

The National Arts Centre is a smoke-free environment.

PERSONAL PROTECTIVE EQUIPMENT (PPE)

In accordance with Federal and Provincial regulations, the National Arts Centre has adopted a series of Safe Work Procedures. Those procedures apply to everyone granted access to the National Arts Centre.

During setup and strike work calls everyone working, supervising or visiting the stage must wear the following personal protective equipment:

- Long pants
- Hard hat
- CSA approved footwear with safety toe caps, shank and electrical shock resistance

No access to the worksite will be granted unless the required PPE is worn. Failure to comply will result in an eviction from the stage.

FALL PROTECTION

Every person working at an unprotected height of more than 8'-0" (2.4 m) has to wear a fall protection harness and be attached to a proper anchor point using a shock-absorbing lanyard and possess a valid Working at Heights certificate from the Ontario Ministry of Labour.

PYROTECHNICS

The producer of an event who wishes to use pyrotechnic special effects must obtain authorization from the National Arts Centre and a license from the Fire Chief of the City of Ottawa. Details on the type of effects, sequence of firing and a stage layout will be requested. Fees may apply. In addition, the operator will have to hold the proper level of certification from the Explosive Regulatory Division of Natural Resources Canada.

Flame effects are not defined as explosives under the *Explosive Act*. A flame effect device will have to be approved for use by the Technical Standard and Safety Authority (TSSA). Detailed information on the device will be requested, and on-site testing may be requested. Fees may apply.

Without valid license and certification, the National Arts Centre will not authorize the use of any pyrotechnics or flame effects.

FIREARMS

All firearms (including replica firearms) used at the National Arts Centre must be handled in accordance with Federal legislation.

AUDIO LEVELS

This venue requires a mean of 95db with peaks no higher than 110db.



ADDITIONAL INFORMATION

City of Ottawa Fireworks By-Law

<https://ottawa.ca/en/fireworks-law-no-2003-237>

Natural Resources Canada - Fireworks

<https://www.nrcan.gc.ca/explosives/acts-regulations/13846>

Technical Standard and Safety Authority

<http://www.tssa.org/>

Canadian Firearms Program

<http://www.rcmp-grc.gc.ca/cfp-pcaf/index-eng.htm>

Ontario Ministry of Labour Working at Heights

<https://www.labour.gov.on.ca/english/hs/topics/heights.php>

Applicable Legislation & Regulations

Canada Labour Code, Part II, Occupational Health and Safety

<http://laws-lois.justice.gc.ca/eng/acts/l-2/page-53.html>

Canada Occupational Safety & Health Regulations

<http://laws.justice.gc.ca/eng/regulations/sor-86-304/index.html>

Ontario Occupational Health & Safety (OHS) Act

http://www.e-laws.gov.on.ca/html/statutes/english/elaws_statutes_90o01_e.htm

Industrial Establishment Regulations made pursuant to the OHS Act of Ontario

http://www.e-laws.gov.on.ca/html/regs/english/elaws_regs_900851_e.htm

Construction Projects Regulations of Ontario

http://www.e-laws.gov.on.ca/html/regs/english/elaws_regs_910213_e.htm



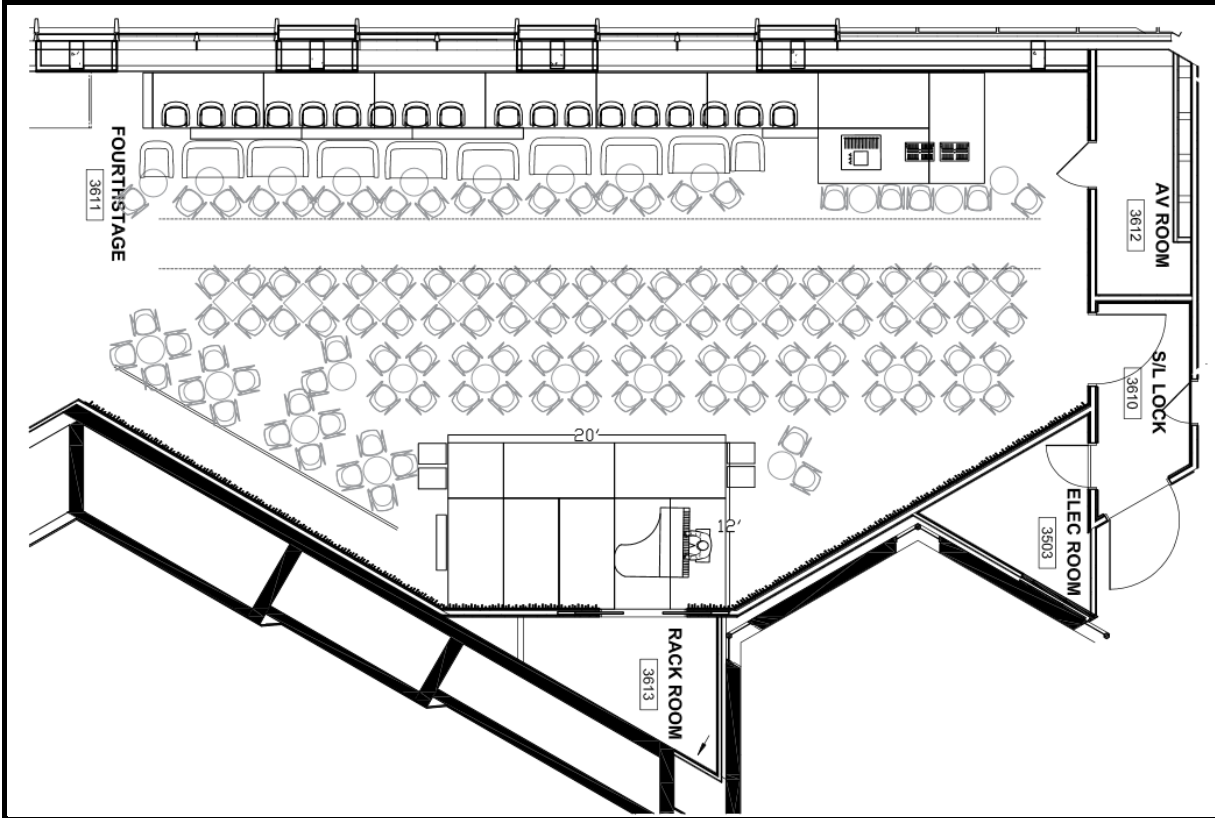
**NATIONAL ARTS CENTRE
CENTRE NATIONAL DES ARTS**

Canada is our stage. Le Canada en scène.

GENERAL INFORMATION

SEATING CHART

[Fourth Stage Seating Plan](#)



SEATING CAPACITY

The standard seating configuration seats 150 people. Accessibility seating can be configured or adjusted depending on your needs.

Bar Stools (Upper Level)	18
Purple Couches & Arm Chairs	18
Chairs (at tables)	114
Tables	33
TOTAL SEATING	150

ROOM

The room is pentagonal in shape and can accommodate many different temporary layouts. Should the layout be changed for an event, it will need to be returned to its standard configuration (as seen in the diagram above).



**NATIONAL ARTS CENTRE
CENTRE NATIONAL DES ARTS**

Canada is our stage. Le Canada en scène.

VENUE FLOOR

Stage Aluminum risers with black plywood decks
Floor Black Marmoleum on plywood

GRID

The grid of the Fourth Stage is a 1 1/2" schedule 40 pipe grid.

DIMENSIONS

Width 70'-0" 21.3 m
Depth 38'-0" 11.5 m
Stage 12' x 20' x 18" 3.66 x .45 m

FREE HEIGHT

Floor to under grid 14'-0" 4.3 m
Stage to under grid 12'-6" 3.81 m

MASKING

Behind the stage and extending on either side of the stage are black velour panels, allowing the option of covering the texturized walls of the room. All stage masking is IFR (Inherently Flame Retardant).

Qty	Description	Colour	Width	(in meters)	Height	(in meters)
3	Upstage Drapes	Black	8'-0"	2.5 m	6'8"	2.0 m
4	Stage Left Drapes	Black	8'-6"	2.5 m	8'-0"	2.5 m
3	Stage Right Drapes	Black	10'-0"	3.0 m	8'-0"	2.5 m

LOADING DOCK

Location All loading is done from street level with access limited to double standard doors.
Door height 7'-7" (2.4 m)
Door width 5'-4" (1.7 m)

UNION

All technical work on stage must be done by NAC employees under the jurisdiction of the collective agreement with IATSE Local 471.

Workers are separated in multiple departments:

- Stagehands
- Projectionists
- Wardrobe
- Hair & Makeup

The minimum IATSE crew requirement when using this venue:

- 1 x Stagehand



NATIONAL ARTS CENTRE CENTRE NATIONAL DES ARTS

Canada is our stage. Le Canada en scène.

AUDIO

MIX POSITION

Main Mix Position House left, rear corner.

EQUIPMENT

Console DiGiCo SD9 with a 48 channel D2 Rack

SPEAKERS

Qty	Brand	Model	Purpose
6	Meyer Sound	UPJ-1P	House Speaker
4	Meyer Sound	UPJunior	House Speaker
6	Meyer Sound	UPM	House Speaker
4	Meyer Sound	USW-1P Subs	Subwoofer
6	Meyer Sound	MJF-208	House Speaker

BACKLINE

The NAC owns several guitar and bass amps that are shared with the other performance spaces. Please contact the Production Department for details and availability.

INTERCOM SYSTEM

Available by prior arrangement only. Please contact the Production Department for more details.

MICROPHONES

All mics are shared with the other NAC performance spaces. Please contact the Production Department for availability.

PIANO

Yamaha C-2 Baby Grand (Pitch A-440)

AUDIO LEVELS

This venue requires a mean of 95db with peaks no higher than 110db.



**NATIONAL ARTS CENTRE
CENTRE NATIONAL DES ARTS**

Canada is our stage. Le Canada en scène.

LIGHTING

CONTROL POSITIONS

Lighting Booth/Position House left, rear corner.

CONSOLES

ETC Gio@5

PROTOCOL

sACN Network & DMX-512 via gateways

DIMMER

96 ETC Sensor3 2400W ThruPower Modules

INSTRUMENTS

Qty	Description
36	ETC Source 4 Lustr II
3	Martin Rush Par II RGBW Zoom
12	Martin Mac Aura XB
10	Robe DL4S Profiles
2	Chroma-Q Color Force II 72"

Currently all instruments are hung in a 1 area stock plot.

ELECTRICITY

Upstage Piano Storage 200 A

CONNECTORS

Twistlock L5-20, 125 V, 20 A
Cam-lok J Series, 400 A

COLOUR MEDIA

Rosco Roscolux and e-colour+



ACCESSORIES

Note: These accessories are shared with the other NAC performance spaces. Please contact the Production Department for availability.

- Gobo holders, rotators and iris'
- Source 4 strobe caps
- I-Cue Mirrors
- Mirror Ball
- TVs
- Roland V800 Video Mixer
- Music stands (QTY: 10)
- Music stand lights (QTY: 7)

ADDITIONAL EQUIPMENT

RISERS

- 4' x 8' decks
- 4' x 4' decks
- 2' x 8' decks
- 2' x 4' decks
- Assorted legs ranging from 6" to 60" in height

Risers come with optional guardrails, chair stops, skirting, panels and swivel caster inserts.

DANCE FLOOR

Qty	Item	Size	
9 rolls	Harlequin Cascade, Black	59'-0" x 6'-6"	18.00 m x 2.00 m
10 rolls	Harlequin Reversible, White/Black	41'-0" x 6'-6"	12.50 m x 2.00 m
10 rolls	Harlequin Reversible, Grey/Black	41'-0" x 6'-6"	12.50 m x 2.00 m

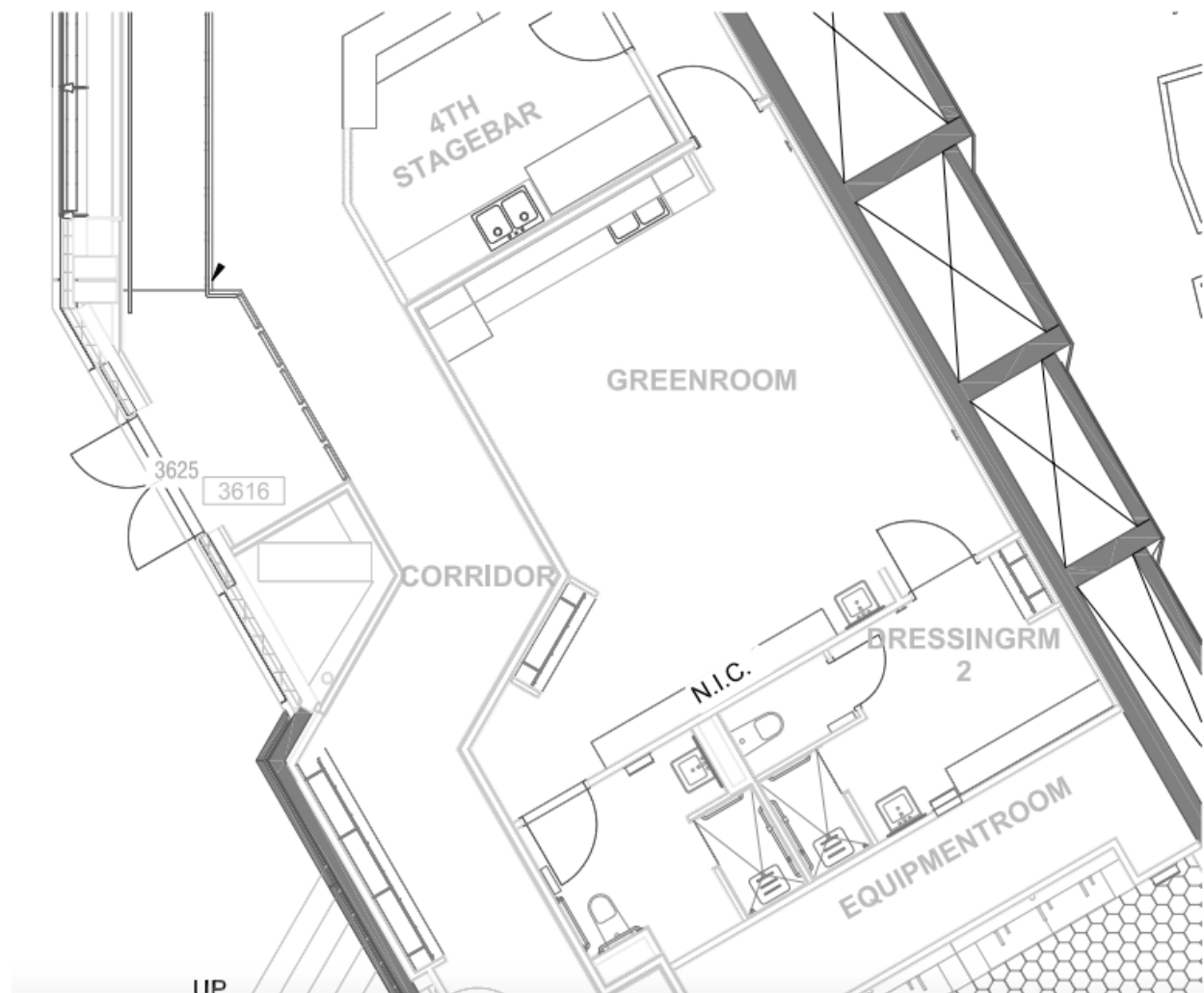
Note: these dance floors are shared with the other NAC performance spaces. Please contact the Production Department for availability.



BACKSTAGE INFO

DRESSING ROOM & GREEN ROOM

The dressing room and green room are located on the same level and next door to the Fourth Stage. The dressing room is equipped with mirrors and lights, a toilet, sink and shower.



WARDROBE

When wardrobe is required, they share the Green Room common area adjacent to the dressing room. Equipment is shared with the other NAC performance spaces.

Available equipment: washing machines, dryers, sewing machines, irons, industrial steam irons, steamers.